



TRƯỜNG ĐẠI HỌC Y DƯỢC THÁI BÌNH

Thai Binh University of Medicine and Pharmacy



Summary of microbiological findings in healthy human

Materials and methods

- ✓ Fecal specimens were collected from healthy asymptomatic individuals, including farmers in Hanoi and Thai Binh, and marker sellers in Nha Trang.
- ✓ Sampling at Hanoi, Thai Binh and Nha Tran since 2013.
- ✓ Total collected sample numbers: more than 1500.
- ✓ CTX-M type ESBL-producing bacteria have been screened and characterized by following the protocol which had been established in this project.
- ✓ Collected fecal specimens were subjected to microbiological and molecular biological analysis, such as phylogenetic grouping, genotyping of antibiotic-resistant genes, antibiotic susceptibility test and PFGE.

Prevalence of the CTX-M type ESBL-producing *E. coli* in healthy asymptomatic individuals in Vietnam.

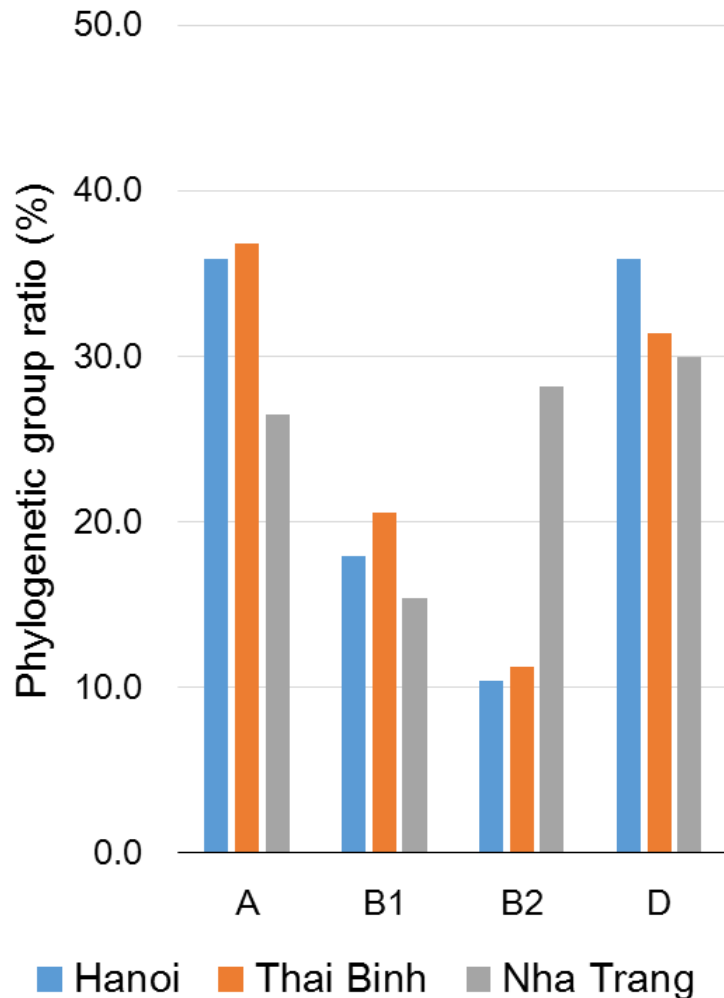
Sites	ESBL-producing bacteria in healthy people	
	N	%
Hanoi ¹	1025	59.0%
Thai Binh ¹	397	65.0%
Nha Trang ¹	156	75.0%
Total	1578	62.1%
Thailand ²	417	65.9%
Japan ³	218	6.0%

1: Samples were collected from market seller in Nha Trang, from farmer in Hanoi and Thai Binh.

2: Luvsansharav UO, et al., J Antimicrob Chemother. 2012;67(7):1769–1774.

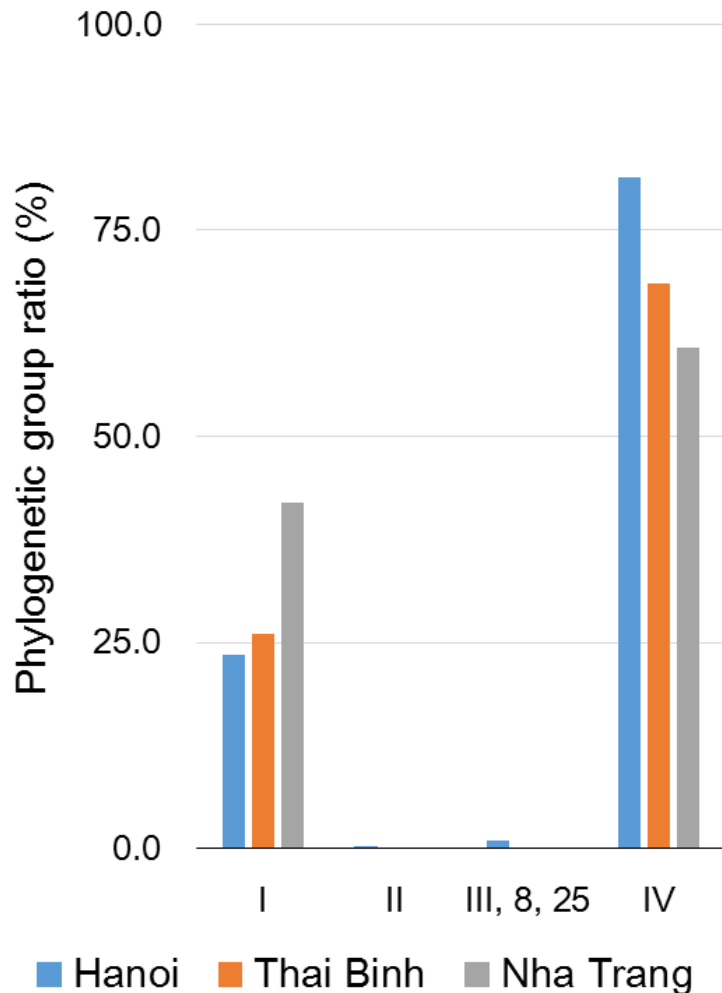
3: Luvsansharav UO, et al., J Infect Chemother. 2011;17(5):722-725.

Phylogenetic group classification of the isolated CTX-M type ESBL-producing *E. coli*



N	Hanoi	Thai Binh	Nha Trang
A	104	95	31
B1	52	53	18
B2	30	29	33
D	104	81	35
Total	290	258	117

Genotyping of the detected *bla*_{CTX-M}s in healthy human.



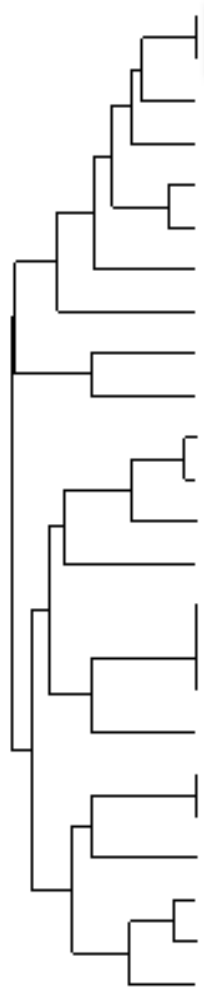
N	Hanoi	Thai Binh	Nha Trang
I	68	67	49
II	1	0	0
III, 8, 25	3	0	0
IV	236	177	71
Total	308	244	120

Clinical isolates and isolates from UTI patients

- ✓ 86 clinical isolates were collected in Nha Trang, and 36 isolates (41.9%) were ESBL-producing *E. coli*. Among them, 35 isolates were CTX-M type ESBL-producing *E. coli*.
- ✓ Until now, 14 CTX-M-I group genes (11 $bla_{\text{CTX-M-15}}$ and 3 $bla_{\text{CTX-M-55}}$) and 12 CTX-M-IV group genes (4 $bla_{\text{CTX-M-14}}$ and 8 $bla_{\text{CTX-M-27}}$) were confirmed.
- ✓ 12 ESBL-producing *E. coli* isolates were obtained from 50 UTI patients (24.0%) in Thai Binh.
- ✓ 6 CTX-M-I group genes (5 $bla_{\text{CTX-M-15}}$ and 1 $bla_{\text{CTX-M-55}}$) and 6 CTX-M-IV group genes (1 $bla_{\text{CTX-M-14}}$ and 5 $bla_{\text{CTX-M-27}}$) were detected.

PFGE analysis (Phylogenetic group B2)

E R E E E



13TB074	13Aug31	Fish	Thong	E2	TBM	ESEL	cbx-m-9s	FIB/Frep
15TBU027	DK787(1)	UTI	T	E2	TBM	ESEL	C.TX-M-27	FIB
14TB180	14Jun22	Shrimp	Lua	E2	none	ESEL	cbx-m-9s	FIB/Frep
31.093_Dec13	31.093	human	T	E2	TBM	ESEL	C.TX-M-27	FIB/Frep
19.080_Dec13	19.080	human	T	E2	TBM	ESEL	C.TX-M-27	FIB/FIA, Frep
22.087_Dec13	22.087	human	T	E2	TBM	ESEL	C.TX-M-27	FIB/FIA, Frep
15TBU008	DK597(1)	UTI	T	E2	TBM	ESEL	C.TX-M-15	FIA, FIB, I1
44.132_Dec13	44.132	human	T	E2	T	ESEL	C.TX-M-14	FIB/Frep
13TB019	13Jun15	Chicken	Thong	E2	none	ESEL	cbx-m-9s	FIB/HI2
15TBU020	DK999	UTI	T	E2	TBM	ESEL	C.TX-M-15	FIB
15TBU023	DK851(1)	UTI	T	E2	TBM	ESEL	C.TX-M-27, CMY-8b	A/C, FIA, FIB, Frep
15TBU025	DK888(1)	UTI	T	E2	TBM	ESEL, A	C.TX-M-27, CMY-8b	A/C, FIA, FIB, Frep
15TBU032	DK702(1)	UTI	T	E2	0	ESEL	C.TX-M-27	A/C, FIB
13TB056	13Aug18	Shrimp	Cau	E2	TBM	ESEL	cbx-m-9s	FIB/H1, HI1, N
70.212_Dec13	70.212	human	T	E2	TBM	ESEL	C.TX-M-14	FIB/FIA-like, Frep
16.046_Dec13	16.046	human	T	E2	TBM	ESEL	C.TX-M-14	FIB/FIA-like, Frep
16.048_Dec13	16.048	human	T	E2	TBM	ESEL	C.TX-M-14	FIB/FIA-like, Frep
14TB010	14Mar08	Chicken	Thong	E2	TBM	ESEL	cbx-m-9s	FIB/N, HI2
13TB007	13Jun08	Shrimp	Thong	E2	none	ESEL	cbx-m-9s	FIB/FIA, Frep
13TB011	13Jun07	Shrimp	Thong	E2	none	ESEL	none	FIB/FIA, Frep
13TB003	13Jun02	Pork	Thong	E2	none	ESEL	cbx-m-9s	FIB/FIA, Frep
32.098_Dec13	32.098	human	T	E2	NONE	ESEL	C.TX-M-27	FIB/FIA
20.084_Dec13	20.084	human	T	E2	NONE	ESEL	C.TX-M-27	FIB/FIA
06.020_Dec13	06.020	human	%	E2	NONE	ESEL	C.TX-M-27	FIB/FIA

Summary

- ✓ Prevalence of the CTX-M type ESBL-producing *E. coli* was high (62.1%) in Vietnamese healthy individuals.
- ✓ The CTX-M-type ESBL-producing *E. coli* was detected in clinical isolates (41.9%) and UTI patients urine samples (24.0%) with higher detection rate.
- ✓ PFGE analysis indicated similar ESBL-producing *E. coli* strain was detected in food item (fish) and UTI patient.



**THANK YOU
FOR YOUR KIND ATTENTION**